



Annual Report

Year ending December 31st 2008

1400 Teche Street, New Orleans, LA 70114
Office Phone: 504-365-8800 Clinic Phone: 504-361-9800 Fax: 504-368-9836
Toll Free Phone: 1877-361-9801 Toll Free Fax: 1-877-361-9807
Email: admin@cghc.org Website: www.cghc.org

Table of contents

Mission Statement & Objectives	3
Staff	4
Organizational Structure.....	6
Communication Resources.....	7
Clinic Programming	9
Leadership Development.....	22
Community Partnerships	24
Grant Funding	33
Capital Projects	34
Proposed Budget for 2009.....	35
Appendices	36
CGHC Brochure	appendix I
Health on the Ground Newsletter.....	appendix II

Mission Statement & Objectives

Mission Statement:

The Common Ground Health Clinic is a non-profit organization that provides free quality health care for the greater New Orleans community, and develops and provides programs to address community health care needs through collaborative partnerships.

Purpose:

- To deliver quality healthcare services for free at the point of care
- To provide quality healthcare education for preventive self-care
- To create an environment conducive to patient, staff and volunteer learning
- To provide quality integrative healthcare
- To work in an anti-racist paradigm

CGHC
Administration

The Board of Directors

R. Noah Morris	Chairman
Ramona Ragas	Vice-Chair
Greg Griffith	Secretary
Kimberley Richards, PhD	Member
Donald Erwin, MD	Member

Administration

Michelle Carley, MD	Medical Director
Antor Ndep, DrPH (c)	Executive Director
Anne Mulle, ANP, RN	Clinic Manager
Bayard Love	Finance Officer

Medical Providers

Amita Toprani, MD (Internal Medicine)
 Anne Mulle, APN, RN (Family Practice)
 Karen Friday, MD (Endocrinologist)
 S. Gupta, MD (Dermatologist)

Acupuncturist

Valerie Viosca

Herbalists

Amy Seifert

Rachael Reeves

Wendy Hounsel

Clinic Support Staff

Anna Flores	Interpreter
Edwin Burks	Front Desk Manager
Emily ‘Eve’ Kuffner	Interpreter
Jeannie Mason	Medical Office Assistant
Ronasheia Alvarez	Bilingual Outreach Coord.

Nurses

Kristina Don- Jordon, LPN

Patricia C. Judd, RN

Marilyn Burnside, RN

Social Workers

Marie Romeo, MSW
 Pastor Torin Sanders, LCSW

Project Coordinators

Greg Griffith	CH&SI
Narda Hernandez	LHOP

Clinic and Administrative Support

Amy Wolfe, EMT

Anita Powell

Beverly Richard

Bahiyyih Khelgati

Emily Wheelis

Coleen Murphy

Geoffrey Hennies

Katrina Badger

Lanette Williams, RSW

'R' Noah Morris, EMT

Rodrigo Gamarra

Wesley Samms

Website Management and Support

Administrative Support

Volunteer Meals

LHOP

LHOP

Editor: Resource Guides & Newsletter

IT Support

LHOP

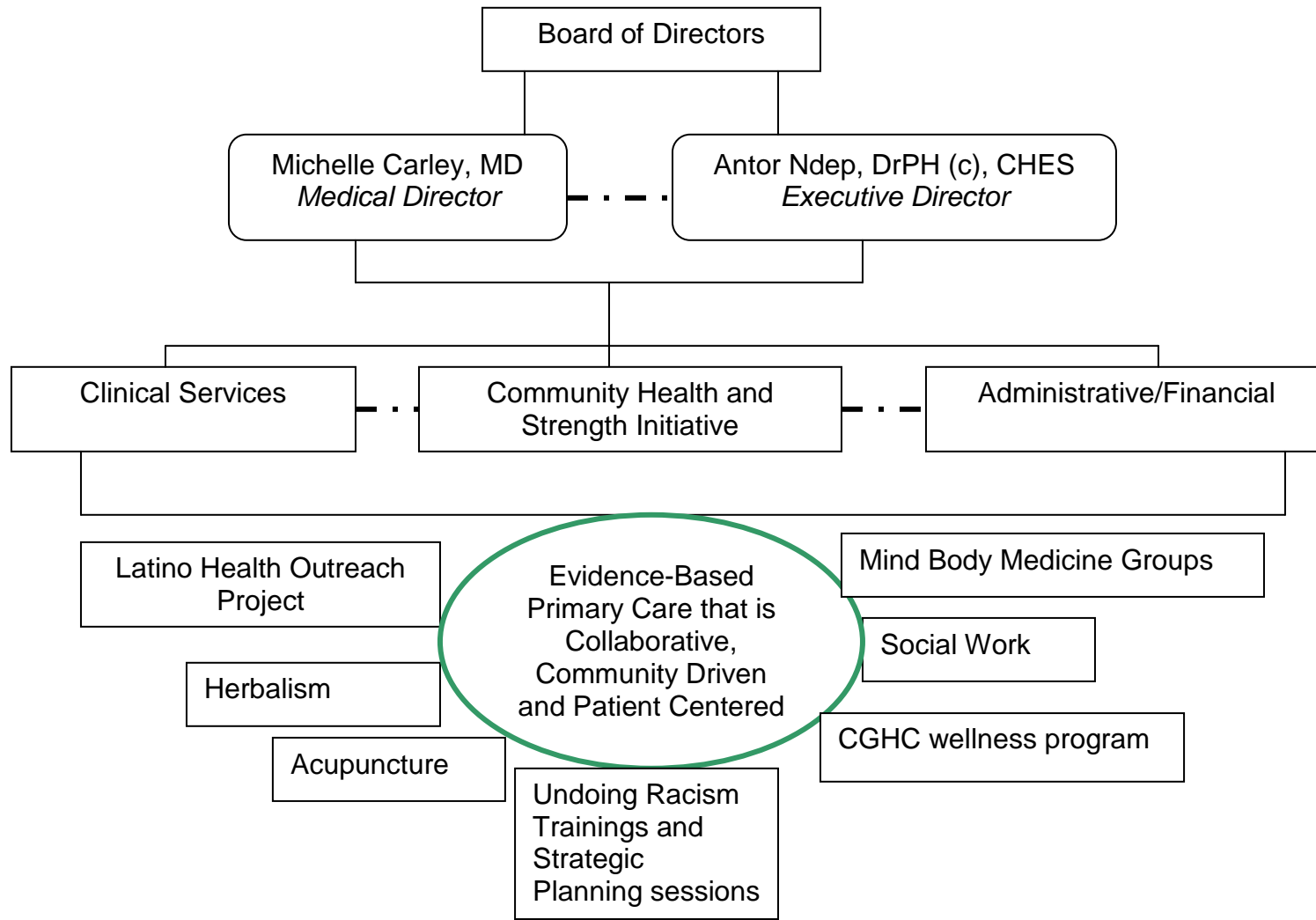
Outreach Coordinator and Liaison, NFFN

Clinic Intake

LHOP

LHOP

COMMON GROUND HEALTH CLINIC Organizational Chart



Communications

Newsletters

This quarterly publication of the clinic highlights events, activities and at least one community partner organization. On special occasions, a special edition of the newsletter is produced.

Coleen Murphy, our Editor, handles the publication of both the newsletters and the community resource guides. Our newsletters can be accessed at

www.commongroundclinic.org/newsletters

CGHC Brochure

The clinic brochure is a snapshot of the whole organization. Our mission, goals and services are listed. The brochure can be accessed at www.commongroundclinic.org/brochure

CGHC Website

The website is regularly updated by CGHC volunteers and staff. The new CGHC website is www.commongroundclinic.org

Resource Guides

For the past year and a half, funding for the production and printing of the Resource Guides has been provided by REACH NOLA. Since then the Guides have both CGHC and REACH NOLA logos on the front page. The current guides include general guides such as

- The New Orleans Community Guide (the Main Guide)
- The New Orleans Women's Health Guide (first produced in honor of 'V to the Tenth' (10th Anniversary of the Vagina Monologues) Celebrations held in New Orleans in April 2008)

Targeted guides are either issue specific or geography specific. The current targeted guides include

- The Central City Guide
- The Mental Health Guide
- The West Bank Guide

- The Treme/7th Ward Guide (under production)

The Resource Guides can be found on www.cghc.org/resources and www.reachnola.org

Publications in Progress

Herbal protocols

CGHC 2009 Calendar

Executive Director's Reports

There are two Executive Director's Reports which are produced specifically for the Board of Director's meetings and the All Staff meetings. The report mirrors the agenda for the meetings and provides updates about the clinic and its services. The report presented to the Board also includes matters that need the Board's attention or resolution.

Meetings

The following meetings take place here at CGHC

- All staff meeting
- Board of Directors meeting
- Clinical staff meeting
- LHOP debrief meetings
- Program/project related meetings
- Undoing Racism strategic planning meeting

Clinic Programming

Common Ground Health Clinic (CGHC) operates as a primary care clinic and has received national recognition as an example of effective, holistic, community-based primary care. We are one of the clinics in the Greater New Orleans area that received the Primary Care Access and Stabilization Grant (PCASG). Through this grant we have hired more staff, updated our clinic space and have applied for the National Center for Quality Assurance certification as a patient-centered Medical Home. As a PCASG grantee and a member of REACH NOLA, we are involved in building a better mental health services and support system for our patients. Throughout, we have maintained our core principle of working in an anti-racist paradigm.

Primary Care

The clinic is currently open Monday, Tuesday, Wednesday, and alternating Saturdays. Despite the limited hours we currently see between 180 – 200 patients per week! For many of our patients, the Saturday clinic enables them to not have to miss valuable time at work. Through our network of referrals to specialty care, many of our patients are able to take advantage of sliding scale specialty services such as cardiology, dermatology, optometry, and mammography screenings.

In order to further optimize our quality of care and efficiency as a medical clinic, we implemented an Electronic Medical Record System (EMR) in February 2008 and added a Practice Management system in October 2008. The EMR has helped us streamline clinic flow and enabled providers to spend more time with patients. It has greatly increased our ability to refer patients and track their progress as they navigate the complex healthcare system. It has also allowed CGHC to track clinical data, review laboratory results, submit prescriptions electronically and assist in quality improvement of patient care.

Herbalism

Although Common Ground Health Clinic started as a first-aid station with 100% volunteer labor and 100% donated supplies, we now operate as a primary care clinic. As the clinic transitioned from a disaster relief station to an established primary care facility, herbalists and allopathic providers realized the need for more structure and communication between the two

modalities in order to become truly integrated.

Over a period of 6 months, CGHC's herbalists worked with Dr. Ravi Vadlamudi (CGHC's Medical Director, 2005-2008), Phyllis Light (a nationally respected clinical herbalist), and Anne Mulle, Nurse Practitioner and Clinic Manager, to develop a system of herbal protocols. The protocols established standards of integrated treatment for common ailments such as diabetes and hypertension, so that herbal treatment and allopathic treatments at CGHC are mutually beneficial and reinforcing, and to ensure that no harmful drug-herb combinations are prescribed. We currently have 3 volunteer herbalists who are working to become nationally recognized as Registered Herbalists with the American Herbal Guild. With a protocol book that is growing and 50% return rate on their patients, the Herbalists are documenting case studies as part of their registration process.

Latino Health Outreach Project (LHOP)

The Latino Health Outreach Project of Common Ground Health Clinic continues to grow as we enter the fourth year of our existence. We currently operate a weekly mobile clinic and a Personal Protective Equipment distribution program and provide professional interpretation services for CGHC patients and patients of several other clinics. The project is still staffed by many volunteers from across the city. The current coordinator, Narda Hernandez, is a New Voices Fellow and she is working closely with all the providers, volunteers and staff at CGHC to expand the reach of the project as well as establishing common protocols across sites.

LHOP volunteers and staff have been instrumental in promoting and supporting other organizations that provide services to Spanish speaking clients across the city. The following places are the main sites where we refer our patients. A Volunteer Liaison is attached to each clinic site and is expected to help nurture the relationship between that site and CGHC

- The Lower 9th Ward Clinic – Bahiyih Khelgati
- St. Thomas Community Health Center – Katrina Badger
- Delgado Personal Health Care Clinic (STD Testing) – Rodrigo Gamarra

Solidarity Not Charity

- Tulane Community Health Center at Covenant House – Emily Wheelis
- The New Orleans Women's Clinic and St. Anna's Mobile Unit- Narda Hernández

Organization	Service provided by LHOP	Outcome
New Orleans Women's Health Clinic	Translated intake forms	Patients now use Spanish intake forms.
Tulane Community Health Center at Covenant House	Provide Interpreting Service & Translated Main Outreach Flyer	Patients are able to be served adequately both at this clinic and at places where patients are later referred to, for specialty services. Outreach materials are being widely distributed within the Latino community.
Verbo Christian Ministries	2 nd Year that we support 2 Health Fairs hosted by Verbo on October 4 th , 2008 and December 6 th , 2008	Public received vital info on specific resources & our clinic and personal protection gear was distributed: 48 glasses, 30 pairs of gloves, 15 Tyvek suits.
Language Access Coalition	2 LHOP members in Health Subcommittee: Working on Establishing Interpreter Bank	The LAC has decided to work in areas of health, education, and criminal justice. The health committee is composed of many health justice activists that wish to secure access to care for limited-English proficient populations. Currently, the committee is planning interpreters' training, and establishing actual interpreters' bank for the city.
Louisiana Resource Guide Committee	Assessing new and current bilingual social services and women's health resources	In a partnership with different organizations trying to clarify and unite resources for the Southeast region of Louisiana, the CGHC Resource Guide is serving as a model for what should be included and distributed to the public. There will also be a website that can be used by professionals, patients and volunteers.
St. Anna's Medical Mission	Shared Outreach challenges and successes at a support meeting on Oct. 14 th , 2008. Visited the zoo on Nov. 30 th , 2008 as part of ESL training.	While we refer our own LHOP patients to their outreach site, this meeting allowed us to see that we have incorporated the community every step of the way and need to work on that with LHOP. Narda Hernandez, the LHOP Coordinator, feels that LHOP should continue to support St. Anna's in their upcoming events and continue dialogue.
Trinity Counseling Training Center	Since December 2008, hosting a bilingual counselor-in-training intern	Anya will begin to help form the educational classes and counseling sessions at the Elysian Fields site. She helped to interview 30 people at the Elysian Fields site for the community needs assessment.
Pastor Anthony Pierce at 2514 Elysian Fields	2 nd LHOP Site	Building the clinic outreach site to provide referral services, PPE, and medical services.
Louisiana Latino Project of the HIV/AIDS Program Office of Public Health	Supporting Latino Outreach Project in health fair & Outreach activities	LHOP has partnered to increase awareness & testing for HIV, specifically at the corner of MLK & Claiborne Ave and at 2514 Elysian Fields site. LHOP has invited 3 undocumented Latina women to improve financial management of their informal business and to discuss family planning and health issues.

Table 1: Summary of LHOP activities as it relates to CGHC's capacity building role within the city.

Social Work

To adequately manage mental healthcare, we recently hired a full time social worker, Marie Romeo, MSW. Marie works closely with the primary care providers to identify patients that need mental health services. Services include individual and group counseling, referral to psychiatrist (as needed), collaboration with the Bilingual Outreach Coordinator to identify and apply for appropriate social services. All mental health and social work supervision is done by Torin Sanders, LCSW.

With a grant from Red Cross through REACH NOLA Health and Resiliency Project, CGHC now participates in a collaborative care model and all clinical staff and outreach workers participate in the Mental Health Infrastructure Training. CGHC Social Worker, Marie Romeo, and Ronasheia Alvarez, the Bilingual Outreach Coordinator are leading the development and implementation of the Collaborative Care Model. There is internal collaboration with the Herbalists where herbal teas and stress reduction education pamphlets are distributed to patients. In addition, the social workers collaborate with the primary care providers to provide specialized cookbooks for diabetic and hypertensive patients.

The intake staff now screens all patients for depression using the PHQ-2; screening patients by asking two quick questions. With the help of our Bilingual Outreach Coordinator, Ronasheia Alvarez, Social Work services continue to range from counseling, to case management to referrals to Medicaid enrollment. Services are geared towards patients needs, for example, many patients have been asking for assistance with Medicaid applications as well as prescription assistance. The referral system at the clinic has been launched. As of now, we have a system in which providers send the referral, the Social Worker is notified, and she tracks all appointments and receives medical records.

Acupuncture

Acupuncture has always been part of the services provided at the clinic since its inception. Quang Hyung and Valerie Viosca have alternatively provided acupuncture serves at CGHC clinic and staff/volunteer wellness events. Acupuncture is provided in the clinic every Tuesday. Narda Hernandez, the current LHOP Coordinator and Marie Romeo, the Social Worker are cross-trained by National Acupuncture Detoxification Association (NADA), to provide the five-point auricular protocol for stress relief. Narda provides acupuncture at LHOP on Tuesdays

and at health fairs.

National Center for Quality Assurance (NCQA)

As part of the requirements for the Primary Care Access and Stabilization Grant, CGHC was required to meet certain quality measures as a healthcare facility. We contracted with Transformative Healthcare Solutions to not only meet the requirements as required by Louisiana Public Health Institute (LPHI) but to exceed them and meet the highest level set by the NCQA. Both LPHI and NCQA have three levels of quality standards, however, LPHI levels are lower in comparison to NCQA standards.

LPHI	NCQA
	LEVEL3
	LEVEL2
LEVEL3	
LEVEL2	LEVEL1
LEVEL 1	

Anne Mulle, Nurse Practitioner and Clinical Practice Manager worked with Bay Love, the Finance officer and Dennis Weaver and Carey Supple, contractors from Transformative Health Solutions to set up our EMR to produce the appropriate reports. They identified and built the tracking systems, set up protocols that establish the evidence-based guidelines to be used in patient care. With each protocol set, they could estimate the number of points available for each quality standard met. By submission time, they all agreed that it was possible to reach the level three (3), NCQA.

Clinic in general

With a core staff to guarantee high quality care and consistency for our patients, we are part of a network of clinics that are providing care to the thousands of uninsured and underinsured people of New Orleans. Our current clinical staff includes the following:

- Part-time Medical Director
- Part-time and Volunteer Physicians
- Volunteer Dermatologist

- Family Nurse Practitioner
- Fourth year Medical student rotation
- Volunteer Nurses
- One Licensed Practical Nurse (hired and supported by Visiting Nurses Association)
- Social Worker
- Bilingual Outreach Coordinator
- Medical Office Assistant
- Volunteer Herbalists
- Volunteer Acupuncturist
- Front Desk Manager

We are currently advertising to hire another FT Nurse Practitioner, a Medical Director, and a part time physician. By 2010, we are interested in adding a Massage Therapist and a Physical Therapist to our staff. The following are some of the programs sponsored by CGHC and implemented by staff, volunteers and patients

- CGHC Teche Street Garden – a demonstrational herb and vegetable garden
- Community “herbal dinner” and fire-cider pressing – Annual
- “Wellness Days,” community health awareness events sponsored by CGHC in collaboration with other local organizations
- All day community garden events in collaboration with clinic partners, Food and Farms Network and Parkway Partners - bi-monthly
- Speaking engagements to local groups on herbalism, nutrition, and gardens
- Representation and networking at several national conferences on herbalism
- Herbalism 101 workshop for medical providers and community members given by Phyllis Light, the program’s supervising Herbalist
- Hat making with Ms. Anita Powell
- Mind Body Medicine Skills groups

Community Health and Strength Initiative (CH&SI)

CH&SI is a grant awarded from the Foundation for the Mid South (FMS) and is being used to implement a healthcare strengthening program through community collaboration. The four areas of focus include education, anti-racism training, social justice and farmers' market collaborations.

Achieved outcomes of the CH&SI

The Black Star Academy

CH&SI Program Coordinator set up a computer lab for youth research, homework help and internet access for students who attend Black Star Academy. We have also worked with the Academy to establish a community play park (See PowerPoint Presentation). In addition we have prepared a space and received permits to start a Farmer's Market. The unforeseen outcome related to this project was the community children's enthusiasm to work with us and to be part of a project that benefits them.

The Craige Cultural Center

CH&SI Program Coordinator also established a computer lab at the Craige Cultural Center to enable the center's after school program attendants to conduct research and do their homework. We also provided technical assistance to the leadership of the Craige Center to write and submit a grant to the Gulf Coast Fund and the City Council/Harrah's Community Grant. Our grant writing endeavor to the Gulf Coast Fund was successful. The City Council/Harrah's Community Grant is still pending.

The New Orleans Food and Farm Network

Through the CH&SI funding we were able to provide a community organizer/ liaison stipends to work with the NOFFN and in their Food Talk Project and cooking programs at the O Perry Walker High school in Algiers. Currently the NOFFN is growing and the collaboration is growing stronger as well. The unforeseen outcome was the involvement of the school and students in the Food Talk Project. Many student participants now are co-leads on this project. The Savory Spoon Cooking Class is a nutritional cooking program taught at the O.P. Walker High through the NOFFN. Lanette Williams, RSW, facilitates the cooking class and holds

discussions about the effects of food production on global warming. She also discusses the growing process and helps students track how and where food comes from. The students prepare and cook their own meals twice a week and are tested every Friday about recipes and vocabulary words. The students also keep a journal of all the cooking classes, and at the end of the semester, there is a big celebration of all the cooking, recipe modification and food-related discussions.

The Algiers Community Garden

CH&SI supported our outreach workers and herbalists in partnership with the NOFFN to establish and continue to groom a local community garden. The garden grows herbs and vegetables and also hosts the annual fire cider preparation. The main outcome of this garden is community involvement in clinic activities and the health education on herbs and their usage by CGHC Herbalist, Rachael Reeves with support from her colleagues, Amy Seifert and Wendy Hounsel.

Undoing Racism Workshop

Through clinic sponsored “Undoing Racism” workshops provided by the People’s Institute for Survival and Beyond, the volunteers and staff of Common Ground Health Clinic became actively involved with a newly formed group known as the Algiers Community Collective (ACC). The main goal of the ACC is to inform the Algiers community of current redevelopment plans and to be the steering group that brings all members of the Algiers Riverview area to participate in the redevelopment of their community.

An initial informational workshop for the steering group was held in October 2007. From this training, the group embarked on a door-to-door community awareness campaign, collecting signatures of those interested in being informed about changes in the community. To date the ACC has collected over 250 signatures of community members who feel that they are interested in participating in these community meetings and redevelopment processes.

The ACC is currently working on several projects aimed at preserving the history or the people of Algiers as well as learning other models of collaboration at the grassroots level. Members of the Collective attended the Workers Coop conference and later had two-day follow-up sessions

with representatives from the conference. These conferences and workshops are part of the collaborative process of involving community participation in all aspects of CGHC work.

Community Mediation Services

The Common Ground Health Clinic has maintained a relationship with Community Mediation Services. This relationship and our work within the community were recently recognized when CGHC was cited as a Center for Restorative Justice. Through the Restorative Justice Project, ACC member organizations and individuals including clinic staff and volunteers attended a full day Restorative Justice Workshop earlier in the year.

CGHC/ACC Video Voice Project

CGHC, a member of REACH NOLA's Health and Resilience Project Council, is partnering with the Algiers Community Collective to launch the CGHC-ACC Video Voice Project. This six-month project will attempt to address Algiers mental health crisis by using the Video Voice technique to enhance community engagement. Through our many Health and Resilience activities and services, we have been committed to addressing the mental health crisis in the Algiers neighborhood. Although the provision of these services is essential, it is not enough. As a free walk-in clinic we are using standardized instruments in diagnosing and treating mental health conditions in our patients. We do recognize that too much focus is placed on the negative effects of disasters and not enough emphasis on survivors' stories about coping. Therefore we propose a partnered project where proactive identification of coping mechanisms are encouraged and nurtured as part of our contribution to the Health and resilience of our community members

This project will be modeled after the Central City Video Voice Project. The Central City Video Voice pilot project took place from February - August 2008. Initial evaluation data of that project revealed an impressive potential to engage community and to enhance health and resilience in underserved New Orleans communities through a participatory filmmaking process. The Community Health and Strength initiative has recruited Mr. Keith Jones and Ms. Ifama, long time friends of CGHC and members of ACC to be the project organizers. The table below summarizes the partnership involved in the CGHC-ACC Video Voice Project.

Organization	Representatives	Activities
CGHC	Antor Ndep Greg Griffith Bay Love	Grant writing, budgeting, and general Project management
Algiers Community Collective (ACC)	Ifama Keith Jones	Community organizing, Project support
REACH NOLA	Ben Springgate	Project support
Video Voice Collective	Michele Burton-Oatis	Project coordinator

Table 2: CGHC-ACC Video Voice Project partners

Farmer's Market

Greg Griffith, the Coordinator for CH&SI, intends to continue looking into the possibility of establishing a farmers market and merging health education, nutrition and herbalism through the market as a means of providing our patients with skills and support as they manage chronic diseases.

Community Needs Assessment Project

Through a grant from the Gulf Coast Fund, CGHC launched a Community Needs Assessment project. Using CGHC's philosophy of community engagement, a bilingual needs assessment group was formed known as the Community Needs Assessment Group (C-NAG). The C-NAG, held several bilingual meetings to identify items to include in the questionnaire. Discussions about the community's role in the financial sustainability of the clinic beyond 2010 dominated several meetings. Ideas that came up, included

- Having a sliding scale fee for service
- Establishing clinic membership/ community ownership with annual dues
- Having neighborhood fish fries, bazaars and community fairs
- Black tie events at local hotels
- Cruises on the river

While the list did not show all the possibilities for fundraising, it gave patients, staff and volunteers who make up C-NAG, an opportunity to be involved and to have their voices heard.

A training facilitated by Stacey Cunningham of the Mary Amelia Center helped provide the skills necessary for conducting interviews. Over 200 interviews were conducted in both Spanish and English. Whitney Brookins, is facilitating staff, and volunteers for English data management, while Narda Hernandez is facilitating the Spanish data management.

Mind Body Medicine Skills Groups

Four staff members of CGHC have been trained by the Center for Mind Body Medicine at the professional (basic) level of practice of mind body medicine skills. The trainees include Anne Mulle, Antor Ndep, Marie Romeo and R. Noah Morris. Anne Mulle and Antor Ndep have both completed the Advanced Training and the Children's Training as well.

As part of our collaborative/integrative care and cross-training of staff and volunteers, Anne Mulle, Rachael Reeves, Wendy Housel and Amy Seifert all attended the CMBM Food as Medicine Conference. Since then, many of the skills learned from the conference have informed the clinical practice of the Herbalists.

Several applications of the Mind Body Medicine skills are practiced here at CGHC. They include breathing meditation, shaking and dancing, visual imagery, mindful eating etc. The sessions include:

- 10-week group sessions
- 2-weekend group sessions
- Monthly staff meeting sessions

Thanksgiving Staff Wellness Event

On November 20th, we hosted our 4th Wellness Event with acupuncture, yoga, massage, iridology and mind, body, wellness groups. A creative, de-stressing hat making class was offered to staff on November 22nd.

This wellness evening is scheduled as part of an ongoing effort to support staff wellness and to relieve stress among ourselves and our community partners. Through meditation, guided imagery, acupuncture and different techniques, participants benefit from first hand stress reducing treatment as well as education around self-care. In working with a population of people that have experienced trauma, healthcare providers run the risk of experiencing and internalizing the trauma as our own.

The goals of the wellness program are:

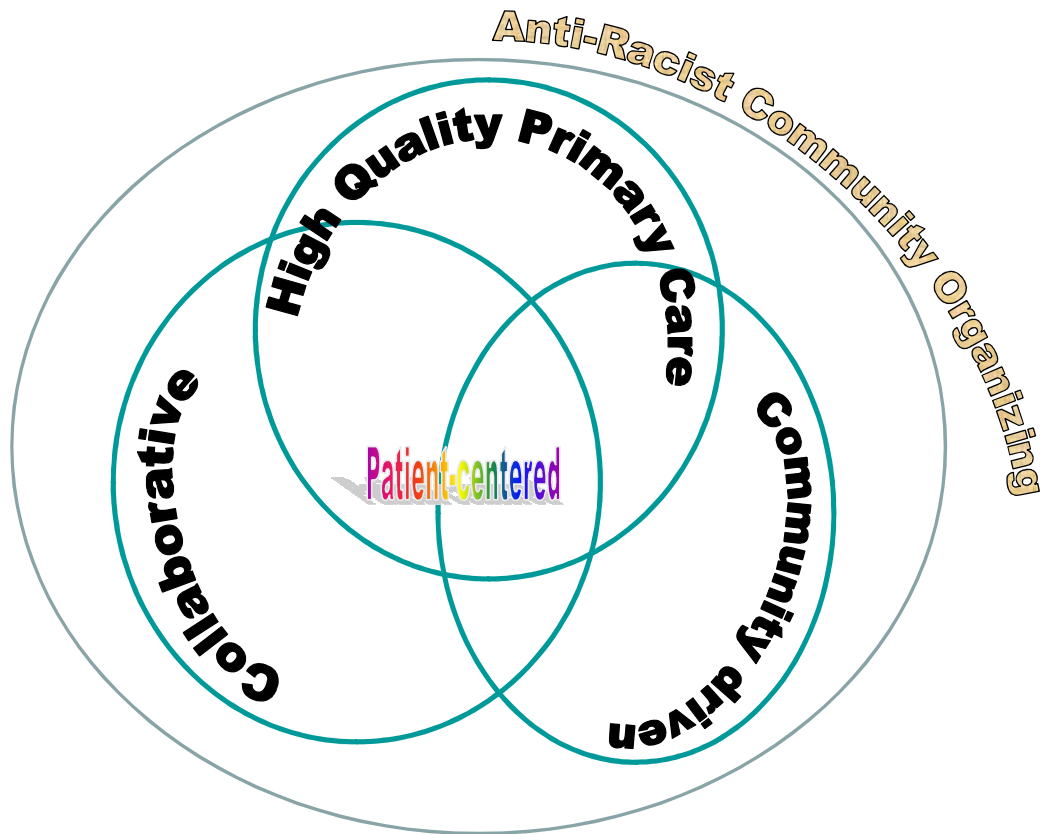
- To support staff, volunteers and community partners in self care.
- To support mental health in staff, volunteers and community partners.
- To introduce integrative healing practices to staff, volunteers and community partners.
- To work collaboratively with other Community Based Organizations and individuals to provide healthcare services.
- To promote collaborative relationships for alternative healthcare programs for the future.
- To continue to promote wellness and self care through out Common Ground Health Clinic.

FUNDRAISING

In the summer of 2008 we launched a major fundraising awareness campaign. Staff and volunteers had the opportunity to discuss different ideas including the possibility of establishing an endowment account. Antor Ndep the Executive Director, and Bay Love, the Finance Officer, met several times with the bankers at Whitney, with support from Robert Darrow, our Accountant to discuss our options.

We currently have set aside \$300,000.00 in a Certificate of Deposit (CD). It is hoped that this will be the beginning of the endowment account we had discussed for over a year. While we wait to establish the endowment, we are working on an investment policy and meeting with several community groups who may be interested in donating to the account.

Defining CGHC



At our November staff meeting, we presented the diagram above as a tentative practice model for CGHC. This model attempts to capture the work at CGHC as already presented above. Changes will be made based on suggestions and opinions from staff, volunteers and patients. We are committed to embrace the mission and purpose that was established by volunteer founders of the clinic. As a result, we intend to make a public display of the mission statement and purpose both at the clinic and the office building (Yellow House).

Leadership Development

One of the purposes of CGHC is- “To create an environment conducive to patient, staff and volunteer learning”. As a result, CGHC supports educational activities, conferences, licensing examinations etc. while it is generally accepted practice to encourage those in training to continue until completion, we do have specific grant-funded programs that benefit our volunteers, staff and patients.

New voices fellowship

We are home to a New Voices Fellow, Narda Hernandez who is a community health educator and organizer. Narda is currently the LHOP coordinator and she works with other volunteers and staff to provide interpreting services at the clinics. She also works with our partners at REACH NOLA, Louisiana Office of Public Health and the Language Access Network to provide health education, health services and leadership. She participates in the statewide strategic planning for language access for our Spanish speaking patients and their family. Under this fellowship, Narda is being mentored by Anne Mulle, our clinical practice manager and Maria Reinat-Pumarejo (one of the bilingual trainers at the People’s Institute for Survival and Beyond).

Medical student mentorship

Since inception, our clinic has been a learning facility for medical students. Three years later we continue to provide a supportive environment for volunteer, patient and staff learning. Former volunteers, who are current medical students in the city, return here for their internships.

Community Development Block Grant (CDBG)

Through the CDBG, we were awarded up to \$ 11,000.00 per student per school year to be trained in a health related field and to find a job in Louisiana after they complete their education. The beneficiaries of this grant are Marie Romeo, Greg Griffith and Lanette Williams.

AARP Community Volunteer

The AARP Foundation assigned a volunteer to CGHC. Ms. Anita Powell helps with administrative duties including filing, inventory, and maintenance of our donor database. Ms. Powell also ensures that thank you letters are sent out to all donors. Ms. Powell, who is also a milliner, has held several workshops for patients, volunteers and staff on basic hat making skills. She plans on developing a hat making class for female inmates at a local prison. CGHC, through the Community Health and Strength Initiative, has supported Ms. Powell in her effort to set up the program.

Graduate student internship

Tulane's Maternal and Child Leadership Training Program assigned an intern to CGHC to be involved in community health programming and partnership development. Whitney Brookins, a Tulane School of Public Health student spent the whole year working on the Community Needs Assessment Project. Through this project, Whitney applied for and got IRB approval, and worked collaboratively with Narda Hernandez to produce a bilingual public service announcement. She also worked under supervision to produce the interview instrument and developed the learning objectives that were used to train the interviewers. Whitney will continue with CGHC as a volunteer to coordinate the data entry and analysis.

CGHC/People's Institute Strategic Planning Sessions

As an organization whose purpose is to work in an anti racist paradigm, CGHC has contracted with the People's Institute to hold a monthly strategic planning session. During these sessions, the staff, volunteers and contractors at CGHC discuss racism and how it affects the healthcare system and how we can deliberately have discussions about Racism. Questions we hope to answer through this process include: 'What is institutionalized racism? How does it work? And how is it the root cause of ill health? At CGHC we believe that undoing racism has to be part of how we practice medicine.

Community Partnerships

Relationships and collaborations with other local organizations form the core of our practice here at Common Ground Health Clinic. In addition to the groups already mentioned in the CH&SI and LHOP sections, here are some more organizations that we work with.

Algiers Fischer Mental Health Clinic

CGHC and The Algiers Fischer Mental Health Clinic (AFMHC) have a Memorandum of Understanding that outlines the relationship between the two clinics as well as the services they provide to referred patients. Patients from CGHC who have been assessed by the social worker and need more specialized mental healthcare are referred to AFMHC. AFMHC patients who need primary care services but have no insurance or means of paying for their care are referred to CGHC.

The Algiers Community Collective

The Algiers Community Collective- "since long before Katrina, many of the current members of the Algiers Community Collective (ACC) had worked together, grown up together, struggled together or at least heard of each other. The aftermath of the levee-break in August 2005 brought other members of the ACC to New Orleans, and because of the reduced number of people doing political work in the city, the need for people coming together, and incredible learning curve that we all experienced with respect to organizing after the storm, connections grew stronger.

Although we had not defined the group, we began to meet regularly to share information, and strategize about how to engage with developers, planners, and community who would all be involved in the processes that would greatly change Algiers in the month and years ahead. As our strategy developed we agreed that our most important role was to ensure that Algiers residents be able exercise their right to know, understand and be part of any planning and development that will change their neighborhood.

On September 26th, 2007, we named ourselves the Algiers Community Collective. We committed to knocking on every door in Algiers Riverview to share the information we had about redevelopment and to inform people of our purpose as a group. In addition, we planned to develop a survey process by which we could generate the data we'd need to develop an equitable plan for the neighborhood and see to it that redevelopment supports Black empowerment."

The ACC is currently conducting a community mapping project, and is soon going to begin a collaborative CGHC/ACC Video Voice Project.

The Black Star Academy

The Black Star Educational Cooperative is the movement of minds and spirits toward a more holistic and organic nature of nurtured learning. The BlackStar educational program is both nontraditional and unconventional in its approach employing the student/ teacher relationship as well as the student/ student relationship to develop, in effect, the current and potential teacher in all who are involved. The BlackStar movement encourages and empowers students to own their educational processes and take the destiny of their educational outcomes into their own control and influences. CGHC helped establish a computer lab at the school and also worked collaboratively to develop the Sankofa Park across the street from the school.

The Craige Cultural Center (CCC)

The Craige Cultural Center- offers a GED program, art and computer classes (some free of charge!), as well as space for rent. They have an event center that features live music, a venue for meetings and receptions, and the Craige's advocate the advancement of art and culture for youth. CGHC has been collaborating with the Craige Cultural Center by co-hosting events there for the past two and a half years, including health fairs, fish-fry fundraisers, People's Institute Undoing Racism trainings, Algiers Community Collective meetings, Holiday Wellness events, and more. They also have a computer laboratory that was set up by CGHC. The CCC is also a Community Safe Space for neighborhood kids.

Louisiana Office of Public Health's Latino Outreach Program

The Latino Outreach Program (LOP) of the Louisiana Office of Public Health (OPH) is committed to strengthening community members by providing free HIV testing and educational dialogues on preventing the spread of HIV and STD infections. Together with NO/AIDS Task Force, these groups are working to improve the quality of health services. For example, at both of our outreach sites, LHOP and LOP work together to refer their clients to each other's services. At Martin Luther King Boulevard and Claiborne Avenue, LHOP provides primary care medical consultations, personal protective gear, and referral support to other agencies such as counseling agencies or food banks. The OPH and NO/AIDS Task Force provide free HIV testing. At Elysian Fields, LHOP refers people that have picked up equipment to seek HIV testing. Furthermore, LHOP uses the van to pick up hygiene kits from the OPH downtown office. A monthly donation of 7 boxes of 24 personal hygiene kits are stored in the CGHC shed and distributed at both outreach sites to day laborers. We also use the van to transport personal protection equipment and our medical supplies to each prospective site. The partnership between the Latino Health Outreach Project of CGHC and the Louisiana Latino Outreach Project of the HIV/AIDS Department of the Louisiana Office of Public Health is planning on developing low literacy, Spanish health education classes for the populations that frequent our two outreach sites.

Language Access Coalition

Since Hurricane Katrina, the Latin American community in the Greater New Orleans area has increased immensely. Unfortunately, the response to this influx has been inadequate. Many newcomers are unable to speak enough English to effectively communicate in certain situations that are important to their overall wellbeing. Whereas the immense increase in the Latin American community is a fairly recent development, the Vietnamese community is a long established group in the area that has been struggling with these issues for many years. While it is the goal of many to learn English, it often takes years for an LEP ("Limited English Proficiency") person to overcome the language barriers with which they struggle on a daily basis. The goal of the Language Access Coalition is to create a responsive system of private and public services to overcome these barriers and build a safer, healthier and more vibrant community.

The Language Access Coalition hosted a community leaders' forum to address issues faced by Limited English Proficiency (LEP) people. The purpose of the forum, was to demonstrate the everyday obstacles faced by LEP community members and to discuss possible solutions to this growing problem. The Language Access Coalition is made up of area non-profit leaders from the Latino and Vietnamese communities who have come together to explore and address the improvement of services available to LEP individuals.

The Mary Amelia Center

The Mary Amelia Douglas-Whited Community Women's Health Education Center seeks to enhance women's health and well-being through community capacity building; leadership development, health education, advocacy and research. Situated at Tulane University School of Public Health and Tropical Medicine, MAC has been on the forefront of women's health research and professional development both locally and nationally. Through their Maternal and Child Health Leadership Development Program, MAC provided support for an intern with CGHC for two semesters. The intern, Whitney Brookins worked on the Community Needs Assessment Project.

In the Spring of 2008, MAC Health Education Coordinator worked with CGHC and other partners to organize a community fundraiser during the V to the Tenth anniversary of the Vagina Monologues. The event showcased local artists who had contributed some of their pieces for the silent auction. The New Orleans Women's Clinic was the beneficiary of the fundraiser.

In the Fall of 2008, MAC Assistant Director Stacey Cunningham worked with CGHC to provide a training session for our Community Needs Assessment group. Further collaborations on train the trainer sessions will be scheduled in 2009.

New Orleans Food and Farm Network (NOFFN)

CGHC collaborates with NOFFN on our Algiers Community Garden on Teche Street and the Savory Spoon nutritional cooking program for healthy eating habits at O. Perry Walker High School in Algiers. The NOFFN projects and events that deal primarily with getting food include:

- Working towards public policy for better access to healthy food

- Educating residents on food projects which increase access to food and improve awareness about food choices
- Bringing people to the table to celebrate local food
- Highlighting where food can be found in our city
- Working with neighborhoods to address their food needs and identify existing and potential food resources"

Plans are underway to continue working with NFFN on nutrition-based programming as well as acquiring and establishing community gardens.

The New Orleans Women's Health Clinic

The mission of the Women's Health Clinic is to equip women with the means to control and care for their own bodies, sexuality, reproduction, and health by providing quality, affordable, and safe health care services to low income and uninsured women of color in the New Orleans area through a holistic, community-centered well woman approach to primary health care integrating sexual health and reproductive justice. The Women's Health Clinic was conceived to combine health services with a political analysis of the oppression that prevents low income, immigrant, differently-abled, formerly and currently incarcerated, uninsured, and lesbian, bisexual, transgender and queer women of color from receiving safe, respectful and empowering health care and education. CGHC partners with NOWHC and others to create and maintain the New Orleans Women's Health Resource Guide

The New Orleans Women's Shelter

The New Orleans Women's Shelter (NOWS) provides transitional housing for homeless women and children in the New Orleans area to assist them in establishing an independent and self-supporting lifestyle. In April 2008 CGHC and other community partners organized a fundraiser during the weeklong celebration of the Tenth Anniversary of the Vagina Monologues (V to the 10th). All proceeds from the fundraiser were donated to the New Orleans Women's Shelter.

Currently the NOWS collaborates with CGHC on other community meetings that talk about women issues and raises awareness on intimate partner violence and the effects of racism on community health.

N'R PEACE

N'R PEACE (Natural Resources Preparing Educating and Changing Environments) provides free HIV and Syphilis testing in New Orleans (and at CGHC on Wednesdays), case management for people living with HIV/AIDS, treatment and prevention education, comprehensive risk counseling services, client advocacy, and early intervention services. N'R PEACE has been providing free and confidential HIV and syphilis testing at CGHC for over two years.

One Torch Inc.

One Torch is a faith based 501c (3) committed to “rebuilding underserved communities” in partnership with community. Their rebuilding strategies facilitate the improvement of economic conditions of underserved communities by focusing on:

1. Targeting financial oppression
2. Supporting minority business entrepreneurship and
3. Building covenant relationships with committed residents, grassroots and other community-focused organizations.

Pamela Jolly, One Torch Founder is also a member of the Algiers Community Collective, and is currently working with the Common Ground Health Clinic to formulate a sustainable business plan.

Ovah Da Riva (The Village)

The Ovah da Rivah Cultural Village- A historical village and public educational site, to teach about African slave history in New Orleans. The Village hosts a Caribbean crafts market, a Lundi Gras celebration, African Heritage Festivals and live reggae from time to time, in addition to frequent educational tours for all school-age children. CGHC continues to collaborate with the Village on educational and social justice events. The Village is also a member of ACC and will be featured in the CGHC/ACC Video Voice Project.

The People's Institute for Survival and Beyond

The People's Institute for Survival and Beyond (PISAB) is a national and international collective of anti-racist, multicultural community organizers and educators dedicated to building an effective movement for social transformation. PISAB affectionately known in the community as The People's Institute, considers racism the primary barrier preventing communities from building effective coalitions and overcoming institutionalized oppression and inequities. Through Undoing Racism™/Community Organizing Workshops, technical assistance and consultations, PISAB helps individuals, communities, organizations and institutions move beyond addressing the symptoms of racism to undoing the causes of racism so as to create a more just and equitable society.

PISAB is collaborating with CGHC on Antiracist Strategic Planning meetings, quarterly Undoing Racism workshops for clinic staff, patients, and community, and a collaborative plan to address racism as an independent risk factor for health and healthy lifestyles.

REACH NOLA

REACH NOLA is an academic-community partnership formed after Hurricane Katrina. CGHC is one of the partner organizations of REACH NOLA and Antor Ndep, CGHC Executive Director is one of REACH NOLA's Board of Directors. The mission of REACH NOLA is

'REACH NOLA seeks to improve community health and access to quality health care in New Orleans through community-academic partnered programs. Our partners include neighborhood organizations, faith-based groups, clinical service providers, academic institutions, and other health stakeholders. Our partnership works by leveraging the strengths of diverse stakeholders toward the common goal of improving the health of the New Orleans community.'

REACH NOLA Partnered Programs

- Health and Resiliency Projects
- Mental Health Infrastructure and Training
 - Collaborative care model
- Women's Health Committee of REACH NOLA
 - Video Voice Project

- Resource Guides

St. Anna's Health Mission

St Anna's Medical Mission is a mobile unit that rotates through designated neighborhoods in and around New Orleans providing holistic healthcare through a volunteer doctor, nurse, social worker and non-medical volunteers, both from in the city and out-of-state. It was founded with the goal of being responsive to the evolving needs of New Orleanians and an important link to rebuilding access to quality healthcare. Our relationship with St. Anna's is as follows

- Member REACH NOLA
- Collaboration to produce the Treme/7th Ward Resource Guide
- REACH NOLA's Health and Resiliency centers

St. Thomas Community Health Center

Our mission is to provide culturally competent health care of the highest quality, regardless of the ability to pay. We foster relevant research and educational activities directed toward achieving community-driven health initiatives that reduce health disparities in our community. (Accessed on 12/15/08 at <http://www.stthomaschc.org>)

St. Thomas Community Health Center is currently one of REACH NOLA's Health and Resiliency Centers and serves as a resource for CGHC for cardiology and mammography referrals. STC Health Center has been a partner of CGHC since 2006 and Dr. Don Erwin is one of our Board Members. With the close relationship between PISAB, STCHC and CGHC, we have had several Undoing Racism trainings one of which was the REACH NOLA partners training held at the newly acquired Mental Health building at St. Thomas. The training brought together REACH NOLA partners and created a unique working environment where it was easier to talk about racism and health.

Trinity Counseling and Training Center

Following the storm (Hurricane Katrina) TCTC began offering counseling and pastoral care to people suffering anxiety and depression following a disaster. After meeting at several REACH NOLA gatherings, the Executive Directors of TCTC and CGHC saw the need for collaboration. Dr. Cooley met with both our LHOP Coordinator, Narda Hernandez, and the Bilingual Outreach Coordinator Ronasheia Alvarez to discuss common needs. Our current relationship with TCTC is as follows

- Counseling services/trainings at LHOP
- Member REACH NOLA Health and Resiliency Project

Tulane Community Health Center at Covenant House

Covenant House is another one of REACH NOLA's Health and Resiliency Centers, and a collaborator in the production of the Treme/7th Ward Resource Guide. LHOP refers patients to Covenant House due to easy access for our patients that live on the east bank of the Mississippi river. The main clinic also refers patients to TCHC when CGHC is closed.

Grant Funding

Solidarity Not Charity

Grant Name	Amount Granted	Amount Received	Expenditures	Remaining Balance	Restrictions
PCASG - 1st supp and base	\$685,772	\$685,772	\$655,925	\$29,847	
PCASG - 2nd and 3rd supp	\$1,379,021	\$1,379,021	\$0	\$1,379,021	
Americares - LHOP	\$25,000	\$25,000	\$25,000	\$0	PPE and LHOP Coordinator
FMS - Community Health and Strength Initiative	\$200,000	\$200,000	\$103,940	\$96,060	See Budget
REACH NOLA Women's Health Subcommittee Project	\$0	\$0	\$6,015	\$(6,015)	At the Discretion of the committee
REACH NOLA Resource Guide	\$0	\$0	\$0	\$6,846	Resource Specialist and Supplies
NYCT Health Care Services (NP or SW)	\$80,000	\$80,000	\$51,982	\$28,018	Nurse Practitioner and LCSW Salary
Harrah's / Carter Capital Campaign Grant	\$5,000	\$5,000	\$0	\$5,000	Building
Harrah's / Fielkow Capital Campaign Grant	\$5,000	\$5,000	\$0	\$5,000	Building
Heron Oaks Grant for Interpreters	\$3,400	\$3,400	\$1,275	\$2,125	Salaries / Contracts for Interpreters
Community Health Needs Assessment Base Grant	\$15,000	\$15,000	\$2,308	\$12,692	Community Health Needs Assessment
Fifth Third Bank/Highfield Foundation	\$5,000	\$5,000	\$0	\$5,000	Building
Academy for Educational Development	\$29,217	\$29,217	\$18,298	\$10,919	New Voices Fellow salary and benefits
Red Cross / REACH-NOLA Mental Health Grant	\$141,900	\$21,831	\$18,732	\$3,099	Mental Health Services; salaries for LCSW, Bilingual Outreach Coordinator and BSW, and contract for Psychiatrist
	\$2,608,310	\$2,488,241		\$1,577,612	

Capital Projects

Solidarity Not Charity

Building:

In 2009 we are planning to purchase and renovate our own building. So far the one building that has the most potential is 501 Newton (The Grey Stone). This building is on the corner of Newton and Nunez. There is a lot across the street (Newton) and another one across Nunez street that can be used as gardens, play ground, parking or farmer's market.

1st and 2nd floor 3,840 sq. ft (each floor is 1,920 sq.ft)

Lot size 2905 sq. ft

The cost to purchase and renovate the building to our specification will be about \$500,000.00

Mobile unit

We are looking into the possibility of buying our own mobile unit complete with exam rooms to be used at the LHOP clinics. Currently Anne Mulle, NP, provides services on the median at the MLK site. During inclement weather, it is difficult to provide care and sometimes the clinic is cancelled.

Projected budget for 2009

Solidarity Not Charity

	<u>Jan - Dec 09</u>
Ordinary Income/Expense	
Income	
Contributed support	1,736,579.00
Earned revenues	<u>4,800.00</u>
Total Income	1,741,379.00
Expense	
Salaries & related expenses	867,476.00
Other personnel expenses	133,080.00
Non-personnel expenses	98,346.00
Occupancy expenses	23,100.00
Travel & meetings expenses	14,220.00
Depreciation & amortization exp	39,600.00
Misc expenses	33,990.00
Business expenses	600.00
Medical Supplies	36,000.00
Herbal Medical Supplies	3,600.00
Prescriptions	<u>600.00</u>
Total Expense	<u>1,250,612.00</u>
Net Ordinary Income	<u>490,767.00</u>
Net Income	<u><u>490,767.00</u></u>

COMMON GROUND HEALTH CLINIC
Conceptual model

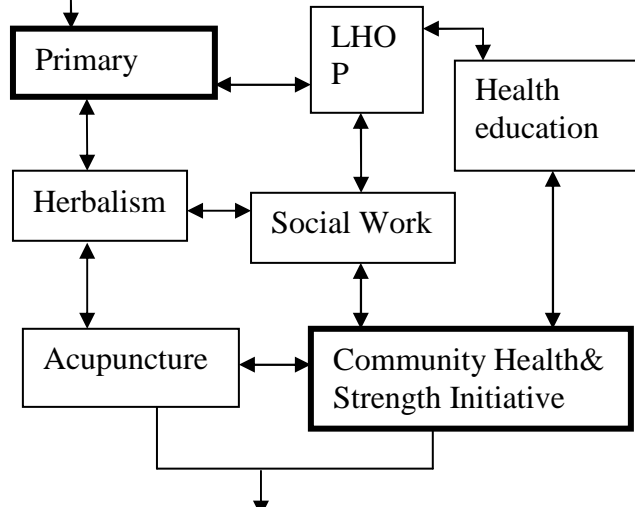
Mission:

The Common Ground Health Clinic is a non-profit organization that provides free quality health care for the greater New Orleans community, and develops and provides programs to address community health care needs through collaborative partnerships.

Purpose:

- To deliver quality healthcare services for free at the point of care
- To provide quality healthcare education for preventive self-care
- To create an environment conducive to patient, staff and volunteer learning
- To provide quality integrative healthcare
- To work in an anti-racist paradigm

Organizational structure:



- High quality Integrative clinical care
- Mind-Body medicine groups
- Staff/volunteers/patient wellness
- Outreach/health fairs
- Video Voices project
- Undoing Racism workshops/ strategic planning meetings
- Farmers market
- Teche Street Garden

Process:

- Collaborate within the clinic to provide integrative care
- Continue to explore our understanding of how racism influences health by attending the Undoing Racism Strategic planning meetings
- Screening movies and documentaries on racism and healthcare systems
- Establish a Community Advisory Board
- Continue to intentionally recruit, train and hire local residents for key positions within the clinic
- Establish an endowment to ensure clinic's financial solvency
- Acquire a space that will meet clinic's current and future space needs
- Expand our services to include more collaborative programming that is preventive and sustainable
- Collaborate outside the clinic to provide integrative and collaborative care

Outcomes:

- Achieve community ownership of clinic
- Achieve the development of a unique model of healthcare that is community based, and anti-racist
- Share our processes and immediate outcomes with the rest of the healthcare community
- General support for programs aimed at treating racism as an independent risk factor for poor health?
- Support for universal insurance system aimed at providing quality healthcare for all?

